

**We Forge Lasting Partnerships**

**TOOLING (CNC, 6 SIDED DRILLS & EDGE BANDERS)**

**TOOLING AND ACCESSORIES FOR YOUR CNC, 6 SIDED DRILLS & EDGE BANDERS**



**Klein**



**ROYCE//AYR**



**leitz**

**EDGE BANDER CONSUMABLES**

**RIEPE BRAND CLEANING & RELEASE AGENTS AND JOWAT BRAND GLUES - PO & EVA**



**HAND TOOLS (SANDERS, NAILERS, PINNERS & STAPLERS)**

**WIDE SELECTION OF BASIC SANDERS, NAILERS, PINNERS & STAPLERS**



**MIRKA**

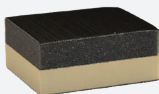


**Prona**



**SANDING ABRASIVES**

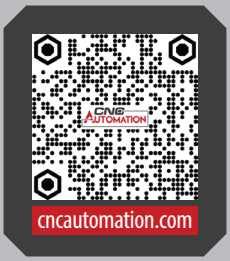
**WIDE SELECTION OF SANDING MEDIUMS FOR HAND AND MACHINE APPLICATIONS**



**MIRKA**



**AMECCI inc**



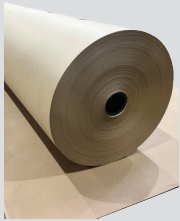
1-800-421-5955 ■ sales@cncautomation.com

HQ Location  
220 Rue Principale  
St-Zotique QC J0P 1Z0

BC Location  
17358 104A Ave, Unit #8  
Surrey BC V4N 5M3



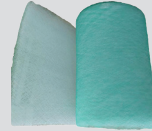
## FINISHING CONSUMABLES & PPE



Various widths & lengths available



ALL YOUR FINISHING ROOM NEEDS - PAPERS, FILTERS & PPE



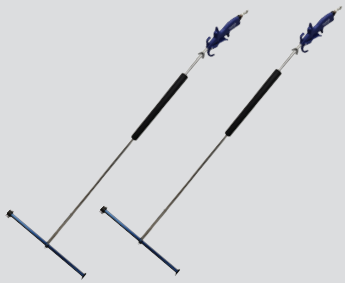
## FINISHING ACCESSORIES



ALL YOUR FINISHING ACCESSORIES



## COMPRESSED AIR ACCESSORIES



KEEPING YOUR WORK PLACE CLEAN



## MATERIAL HANDLING SOLUTIONS

KEEPING YOUR WORK ORGANIZED, SAFE AND PRODUCTIVE

